



The Port Grocer

Port Medway, Nova Scotia
Est. April, 2014



Port Medway, Exit 17A off Highway 103



Annabelle Singleton, Robie Sagar & Arthur the Dog's great adventure!





Making it happen...



**FARMWORKS SHARES ARE NOW AVAILABLE.
INVEST IN FOOD FOR OUR FUTURE.
INVEST CLOSE TO HOME.**

Information sessions will be listed on
<http://farmworks.ca/calendar/>

FARMWORKS™

Nova Scotian agriculture and food production provides jobs throughout the food system, increases food sufficiency, keeps money in Nova Scotia and helps reinvigorate rural communities and the Province.

The Community Economic Development Investment Fund (CEDIF) lends Shareholder investments to food producers to help increase sustainable production and the security provided by access to local food.

CEDIF may entitle shareholders to an initial 35% Provincial tax credit and additional 20% over the next 10 year anniversaries respectively provided certain conditions are met, as well as RRSP contributions. CEDIF endeavours to provide Shareholders with meaningful returns on investments.

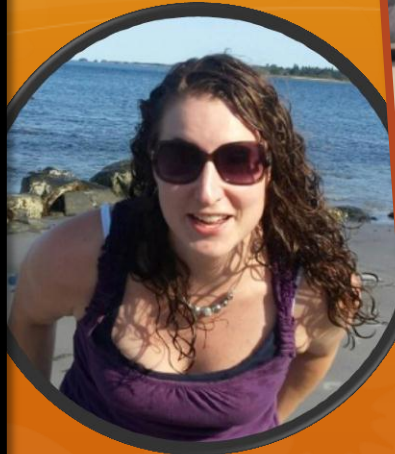
FarmWorks Investment Co-op Limited, 70 Eden Row, Wolfville RR2, NS, B4P 2R2
Phone: 902-670-3660, Fax: 902-542-5812 Email: best@ns.sympatico.ca
SEEKING DOCUMENTS: <http://farmworks.ca/home/>

THIS OFFERING IS MADE THROUGH AN OFFERING DOCUMENT, WHICH CAN BE OBTAINED FROM AN AUTHORIZED PERSON IN NOVA SCOTIA. THIS OFFERING CONSTITUTES AN EXEMPT OFFERING OF THESE SECURITIES ONLY IN NOVA SCOTIA BY THE ABOVE NAMED PERSONS. YOU SHOULD READ THE OFFERING DOCUMENT BEFORE MAKING AN INVESTMENT DECISION.

Kenyon Klenton, Chair and Linda Best, Treasurer, FarmWorks Investment Co-operative Limited.



The Team



Vision Statement

A healthy, sustainable
community, centered on food,
music, art and education.

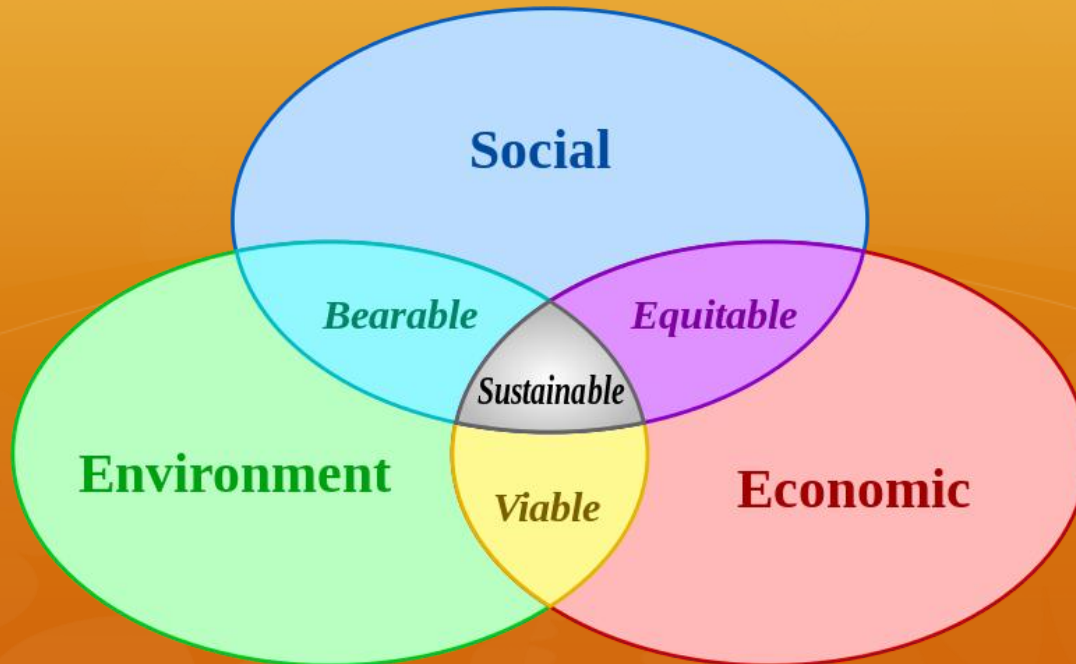


Core Values

- To be a business with a conscience;
- To respect and protect the environment; and
- To lead by example.

Our Goals

To create a community
hub of sustainability;



To provide healthy, wholesome food;





To be a
centre for art



and Music....



Video Production by



Port Jam





...culture and
community



More on Community...



To be a fair and equitable employer;



To make "buying local" a priority;



To support other local small business;

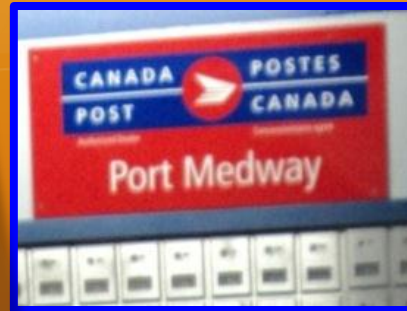
OPEN JUNE 27 - SEPT. 30

Port Medway Art & Design

Contemporary Photography
and Home Design

Seeley Hall, Port Medway Road
Port Medway

Open Thursday through Sunday
11am to 5 pm or by appointment
Contact Pampurves@mac.com



To provide space for other local small businesses come together.

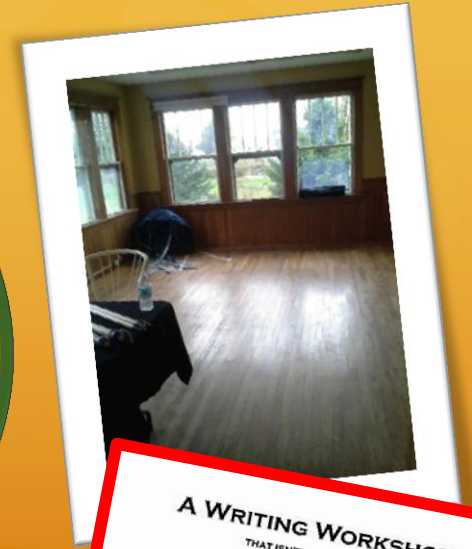




To create an inviting outdoor space through edible and native landscaping;



To provide a community space for continuing education and wellness



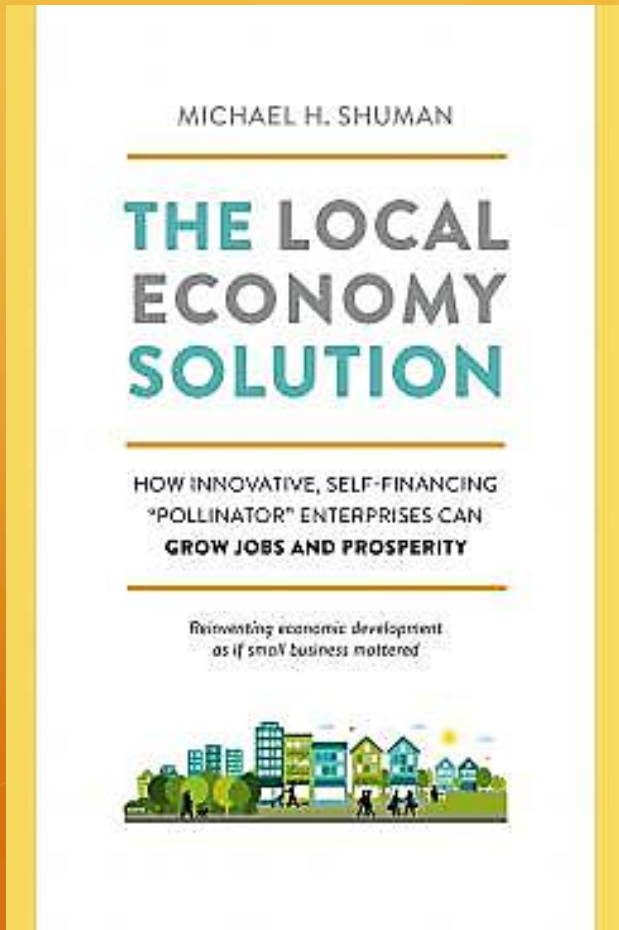
A WRITING WORKSHOP
THAT ISN'T A WORKSHOP
IT'S A
CREATIVE FLING!
Write With Your Toes!
from your sole to the page!

Are you a writer?
Do you sometimes write yourself into bottomless writerly sadness?
Is your Work-in-Progress more like a Work-in-Procrastination?
It's time for a CREATIVE FLING
to motivate you and get your writing flowing straight up from your toes!

Where: The Port Grocer, Port Medway
When: Saturday, June 20, 9am-5pm
Cost: \$50
Who: Designed and presented by:
Libby Broadbent
Please pre-register by email:
libbybroadbent@gmail.com



Local matters...



**The Local Economy Solution -
How Innovative, Self-Financing
"Pollinator" Enterprises Can Grow
Jobs and Prosperity**

By **Michael Shuman**



Local Matters!



Lunenburg-Queens Business Excellence Awards

New Business Award
Sponsor:

nscc
Lunenburg Campus

▶ Details



The Port Grocer



Build it and "they" will come!



AND YET THE QUESTION REMAINED:
"WHO CAME FIRST?"

Come See Us...

